

TECHNICAL BULLETIN



INSTALLATION INSTRUCTIONS FOR
INSTALLATION KIT
ELECTRONIC EQUIPMENT MK-2692NRC
(NSN 5895-01-347-6188) (EIC: N/A)
TO PERMIT INSTALLATION OF RADIO SETS
ANIVRC-87188/90 SERIES
IN A
M1070 HEAVY EQUIPMENT TRANSPORTER (HET)

Approved for public release; distribution is unlimited.

HEADQUARTERS, DEPARTMENT OF THE ARMY

1 SEPTEMBER 1993

TECHNICAL BULLETIN

NO. 11-5820-890-20-83

HEADQUARTERS,
DEPARTMENT OF THE ARMY
WASHINGTON, D.C., 1 SEPTEMBER 1993

**INSTALLATION INSTRUCTIONS FOR INSTALLATION KIT
ELECTRONIC EQUIPMENT MK-2692NRC
(NSN 5895-01-347-6188) (EIC: N/A)
TO PERMIT INSTALLATION OF
RADIO SETS ANNRC-87188190 SERIES
IN A
M1070 HEAVY EQUIPMENT TRANSPORTER (HET)**

REPORTING OF ERRORS AND RECOMMENDING IMPROVEMENTS

You can help improve this manual. If you find any mistakes or if you know of a way to improve the procedures, please let us know. Mail your letter, DA Form 2028 (Recommended Changes to Publications and Blank Forms), or DA Form 2028-2 located in the back of this manual direct to: Commander, US Army Communications-Electronics Command and Fort Monmouth, ATTN: AMSEL-LC-LM-LT, Fort Monmouth, New Jersey 07703-5007.

In either case a reply will be furnished direct to you.

TABLE OF CONTENTS

Subject	Section	Page
Scope	0.1	1
General Information.....	0.2	1
Maintenance Forms, Records, and Reports	0.3	1
Reports of Maintenance and Unsatisfactory Equipment	0.3.1	1
Report of Packing and Handling Deficiencies	0.3.2	1
Discrepancy in Transportation Deficiency Report (TDR) (SF 361)	0.3.3	1
Consolidated Index of Army Publications.....	0.4	1
Purpose of Installation.....	1.	2
End Item or System to be Modified	2.	2
Application Times	3.	2
Time for Completion of Installation	3.1	2
Time for Installation of One Assembly or Component.....	3.2	2
Preparation for Installation.....	4.	2
Preparation of Vehicle	4.1	2
Preparation of MK.....	4.2	2
MK, Distribution, and Consumables	4.3	3
Equipment (TMDE) Required	4.4	8
Installation Procedures.....	5.	9
Tools and Test, Measurement, and Diagnostic		
Installation of Antenna AS-3900NRC (antenna).....	5.1	11
Installation of Antenna Mounting Bracket.....	5.1.1	11
Installation of Antenna Base.....	5.1.2	13
Installation of Top Antenna Assembly	5.1.3	14
Equipment MT-6352NRC (mounting base)	5.2	15
Installation of Loudspeaker, Permanent Magnet LS-454/U (speaker)	5.3	18
Installation of Mounting Base, Electrical		
Installation of Handset Holder for Handset H-250/U	5.4	19
Installation of Cables	5.5	20
Installation of MK-2499NRC	5.6	23
Post-Installation and Checkout.....	5.7	23
Appendix A References.....		A-1

LIST OF ILLUSTRATIONS

Figure	Title	Page
4-1(1)	MK Illustrated Parts List	5
4-1(2)	MK Illustrated Parts List	6
4-2	TSEC/KY-57 Illustrated Parts List	7
5-1(1)	MK and Radio Installation: MK Equipment Locations	9
5-1(2)	MK and Radio Installation: Radio Equipment Locations	10
5-2(1)	Antenna Mounting Bracket Installation.....	12
5-2(2)	Antenna Base Installation.....	13
5-2(3)	Top Antenna Assembly Installation.....	14
5-3(1)	Mounting Base Installation	15
5-3(2)	Mounting Base Installation	17
5-4	Installation of Loudspeaker LS-454/U	18
5-5	Installation of Handset Holder for Handset H-250/U	19
5-6(1)	Installation of Cables	20
5-6(2)	Installation of Cables	22
5-7(1)	Cable Diagram: For AN/VRC-87A/88A/90A.....	24
5-7(2)	Cable Diagram: For ANNRC-87/88/90.....	25

LIST OF TABLES

Table	Title	Page
4-1	Parts List for Installation of Radio Set AN/VRC-87/88/90 Series	4
4-2	Additional Items Required for Installation when using RT-1439NRC.....	7

0.1 SCOPE.

This technical bulletin provides installation Instructions for Installation Kit, Electronic Equipment MK-2692NRC, commonly referred to as the Mounting Kit (MK). The MK shall be installed into the following type of vehicle(s):

M1070 Heavy Equipment Transporter (HET)

The MK is used for installation of radio set components at field locations. The information contained in this technical bulletin is the official authorization to perform the installation at the unit maintenance level.

NOTES

- This technical bulletin is not an authorization for requisition or turn-in of vehicles.
- This technical bulletin does not establish quantity or types of vehicles assigned to using units.

This technical bulletin does not contain information on the maintenance or replacement of the MKs. This information is contained in the MAC of TM 11-5820-890-20-2, TM 11-5820-890-20-4 and RPSTL of TM 11-5820-890-20P.

0.2 GENERAL INFORMATION.

The MK becomes operable when all the radio set components are installed in the vehicle and correct power is supplied. Refer to TM 11-5820-890-20-1 or TM 11-5820-890-20-4 for installation, Operational (OP) Check instructions, and required maintenance procedures. Refer to TM 11 -5820-890-20P for repair parts.

Included in the radio set ANNRC-87/88/90 Series are:

- Radio Set ANNRC-87/88/90 (for RT-1439NRC)
- Radio Set ANNRC-87A/88A/90A (for RT-1523(C)/U)

0.3 MAINTENANCE FORMS, RECORDS, AND REPORTS.

0.3.1 Reports of Maintenance and Unsatisfactory Equipment. See Section 4.2.2.3 for information.

0.3.2 Report of Packing and Handling Deficiencies. See Section 4.2.2.1 for information.

0.3.3 Discrepancy In Transportation Deficiency Report (TDR) (SF361). See Section 4.2.2.2 for information.

0.4 CONSOLIDATED INDEX OF ARMY PUBLICATIONS.

Refer to the latest issue of DA Pam 25-30 to determine whether there are new changes, or additional publications pertaining to the equipment.

1. PURPOSE OF INSTALLATION.

The Electronic Equipment MK-2692NRC (MK) contains the items needed to mount Radio Set ANNRC-87A/88A/90A in a M1070 Heavy Equipment Transporter (HET) (vehicle). If Radio Set ANNRC-87/88/90 is to be installed, communications security equipment (TSEC/KY-57) will need to be installed also; see Section 5.6 for information.

2. END ITEM OR SYSTEM TO BE MODIFIED.

Not applicable.

3. APPLICATION TIMES.

3.1 Time for Completion of Installation. Using two people, a total of 4.5 work hours is required. Typical vehicle downtime is 4.5 hours.

3.2 Time for Installation of One Assembly or Component. The following table lists the time required to install one component. All times have been rounded off to the nearest half hour. The sum of these items will not reflect the typical vehicle downtime.

ITEM	SECTION	TIME
Antenna AS-3900NRC	5.1	1.0
Mounting Base, Electrical Equipment MT-6352NRC	5.3	0.5
Cables	5.5	1.0

4. PREPARATION FOR INSTALLATION.

This section explains how to prepare the vehicle and MK for installation.

4.1 Preparation of Vehicle. To prepare the vehicle for installation, insure that the site includes adequate lighting and a power source when drilling is required. Inspect the vehicle for damage that could affect installation. Have any such damage repaired before installing MK.

4.1.1 Items to be Removed. Remove existing ANNRC-12 radio family installation kit/harness. See TM 11-5820-401-20-2 for removing items used with intercom systems, or TM 11-5820-401-20-1 (used without intercom systems), and TM 9-2320-289-20.

4.1.2 Items to be Retained. Not applicable.

4.2 Preparation of MK. To prepare MK, unpack, inspect and check inventory.

4.2.1 Precautions During Handling. Observe these steps to prevent equipment damage.

- a. Keep dust cover in place on connectors.
- b. Do not disassemble or modify parts in MK unless authorized to do so.
- c. Keep mounting hardware covered and protected until needed.
- d. When exposed to moisture, rain or salt water, keep all parts dry to prevent corrosion.

4.2.2 Unpack and Inspect Equipment.

4.2.2.1 Inspect Packaging for Evidence of Damage. Any shipping damage should be reported on SF364 Report of Discrepancy (ROD) as prescribed in AR 735-11-2/DLAR 4140.55/NAVMATINST 4355.73A/AFR 400-64/MCO 4430.3F.

4.2.2.2 Unpack and Inventory MK. If any item is missing, fill out and forward Transportation Deficiency Report (TDR) (SF361) as described in AR 55-38/NAVSUPINST 4610.33C/AFR 75-18/MCO P4610.19D/DLAR 4500.15.

4.2.2.3 Examine Each Item for Damage. If any item is damaged, fill out and forward SF364 Report of Discrepancy (ROD) as prescribed in AR 735-11-2/DLAR 4140.55/NAVMATINST 4355.73A/AFR-400-64/MCO 4430.3F. All damages should be reported as prescribed in DA Pam 738-750, as contained in Maintenance Management Update.

4.3 MK, Distribution and Consumables.

4.3.1 Items Supplied In MK and/or Required for Installation. Use Table 4-1 and Figure 4-1 to identify and inventory MK parts.

4.3.2 Distribution and Issue Instructions.

- a. US Forces: Do not requisition MK. They will be shipped automatically.
- b. US Army Depots: Requisition MK through supply channels.
- c. Multiservice: Instructions shall be included for multiservice modifications.
- d. MAP/MAS Countries: Instructions shall be provided for MAP/MAS countries.

Table 4-1. Parts List for Installation of Radio Set ANNRC-87/88/90 Series

NSN	ITEM DESCRIPTION AND PART NUMBER	QUANTITY IN MK	SMR CODE	FIGURE ITEM NO.
5985-01-297-2971	Antenna, Vehicular AS-3900NRC (A3017899-1)	1	PAOOF A	4-1, 2
5305-00-847-1159	Screw, Cap, Hexagon (3/8-16 x 1 3/4 in)	4	PAOZZA	
5310-00-913-8881	Nut, Hexagon (3/8-16 in) MS51971-3	4	PAOZZA	4-1, 1
5310-00-061-1258	Washer, Lock, Internal/External Toothed (3/8 in)	8	PAOZZA	
5310-00-889-2527	Washer, Lock, Internal/External Toothed (5/16 in) MS45904-76	2	PAOZZA	4-1, 4
5306-00-225-9086	Bolt, Machine (5/16-24 x 5/8 in) MS90726-31 MS45904-72 (Not Used)	1	PAOZZA	
5330-01-205-2864	Gasket (A3013655-1)	1	PAOZZA	4-1, 3
5975-01-188-8873	Mounting Base, Electrical Equipment MT-6352NRC	1	PAOOF A	
5306-00-225-9089	Bolt, Machine (5/16-24 x 1 in) MS90726-34	5	PAOZZA	4-1, 5
5310-00-889-2527	Washer Lock, Internal/External Toothed (5/16 in)	10	PAOZZA	
5310-00-880-7746	Nut, Hexagon (5/16-24) MS51968-5	5	PAOZZA	4-1, 8
5995-01-219-7034	Cable Assembly, Radio Frequency CG-3855NRC (15 FT, 0 IN) (A3014031-7)	1	PAOZZA	
5995-01-363-1138	Cable Assembly, Power, Electrical CX-13305NRC (5 FT, 0 IN) (A3014042-2)	1	PAOZZA	4-1,9
4020-01-341-8795	Fiber Rope Assembly, Single Leg (A3167672-1)	1	PAOZZA	4-1, 4
	Bracket, Mounting (A3050655-1)	1	PAOZZA	
5965-00-876-2375	Loudspeaker, Permanent Magnet LS-454/U	1	PAOZZA	4-1, 5
5325-00-171-4688	Grommet, Nonmetallic, MS35489-44	1	PAOZZA	4-1, 6
5325-00-262-6649	Grommet, Nonmetallic, MS35489-125	1	PAOZZA	
5965-00-043-3463	Handset, H-250/U	1	PAOZZA	4-1, 7
5975-00-111-3208	Strap, Tiedown, Electrical Components MS3367-5-9 Holder, Handset (A3046323)	10 1	PAOZZA XBOZZA	
5310-00-582-5677	Washer, Flat (1/4 in) MS15795-810	2	PAOZZA	4-1, 7
5310-00-903-5966	Nut, Plain, Hexagon (1/4-20) MS51971-1	2	PAOZZA	
5305-00-225-3839	Screw, Cap, Hexagon (1/4-20 x 1 in) MS90725-8	2	PAOZZA	4-1, 7
5310-00-889-2528	Washer, Lock, Internal/External Toothed (1/4 in) MS34904-68	7	PAOZZA	

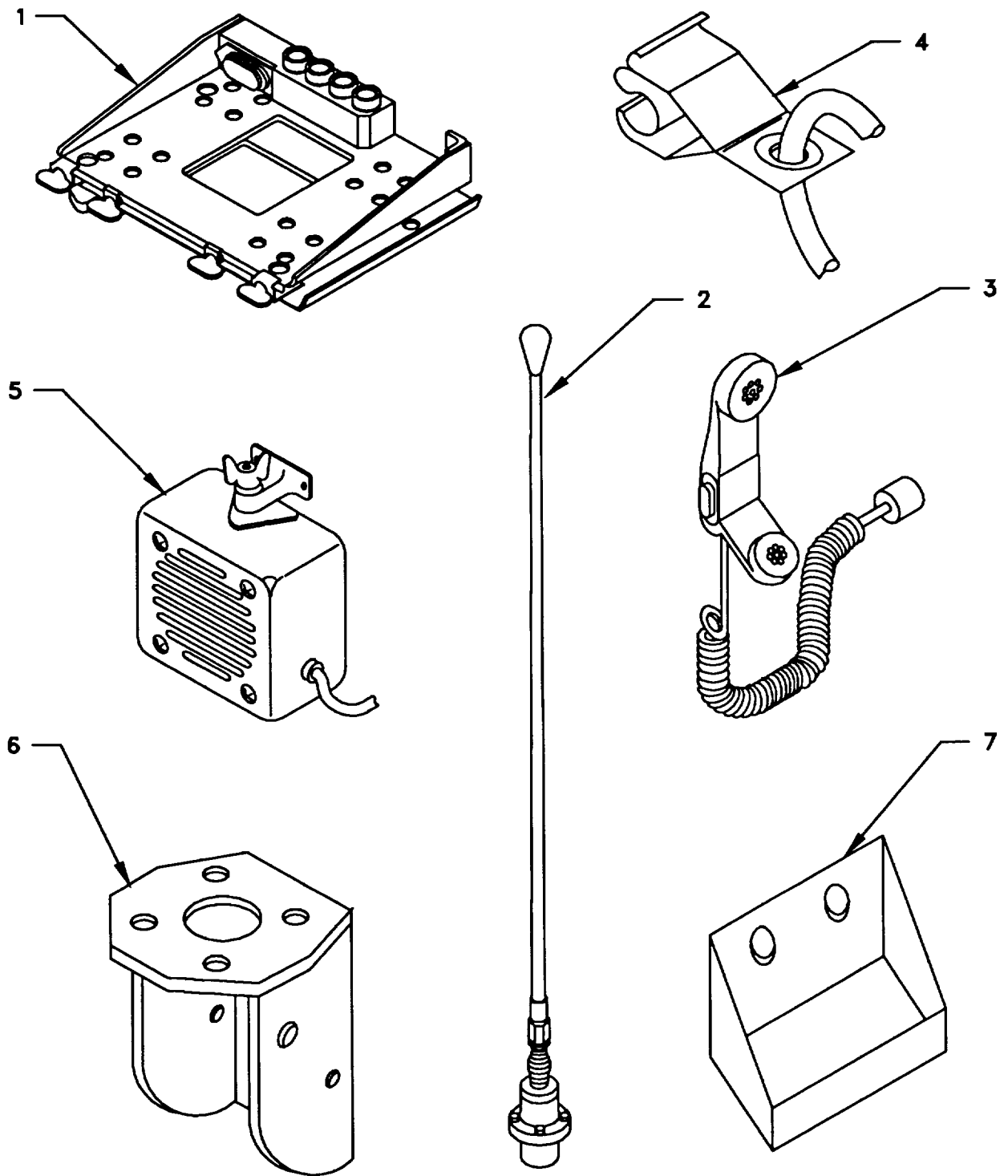


Figure 4-1(1). MK Illustrated Parts List

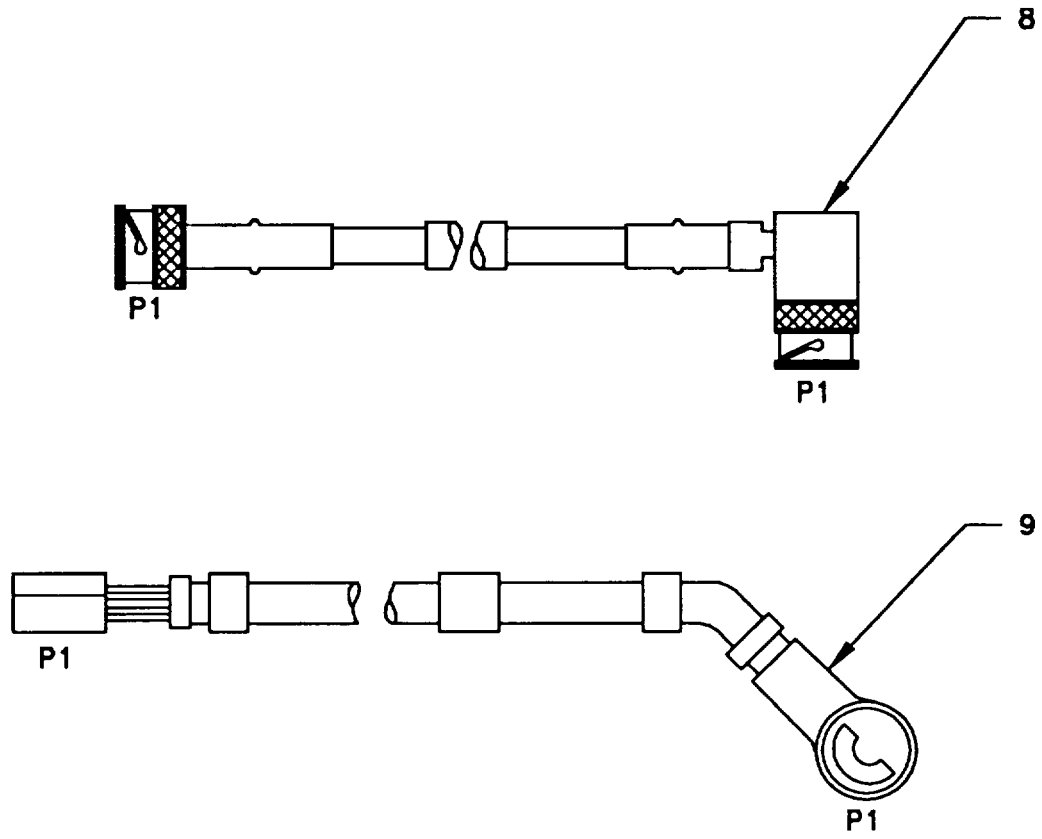


Figure 4-1(2). MK Illustrated Parts List

Table 4-2. Additional items Required for Installation when using RT-1439NRC

NSN	ITEM DESCRIPTION AND PART NUMBER	QUANTITY IN MK	SMR CODE	FIGURE ITEM NO.
5995-01-222-4210	Plate, Mounting (A3050676-1)	1	XBOZZA	4-2, 1
5995-01-226-5482	Cable Assembly, Special Purpose, Electrical CX-13293NRC (4 FT, 0 IN) (A3014034-1)	1	PAOZZA	4-2, 2
5995-01-226-5482	Cable Assembly, Power, Electrical CX-13303NRC (2 FT, 6 IN) (A3014040-5)	1	PAOZZA	4-2, 3
5305-00-984-7350	Screw, Machine, Flat-Head (5/16-24 x 1 in) MS35191-308	4	PAOZZA	

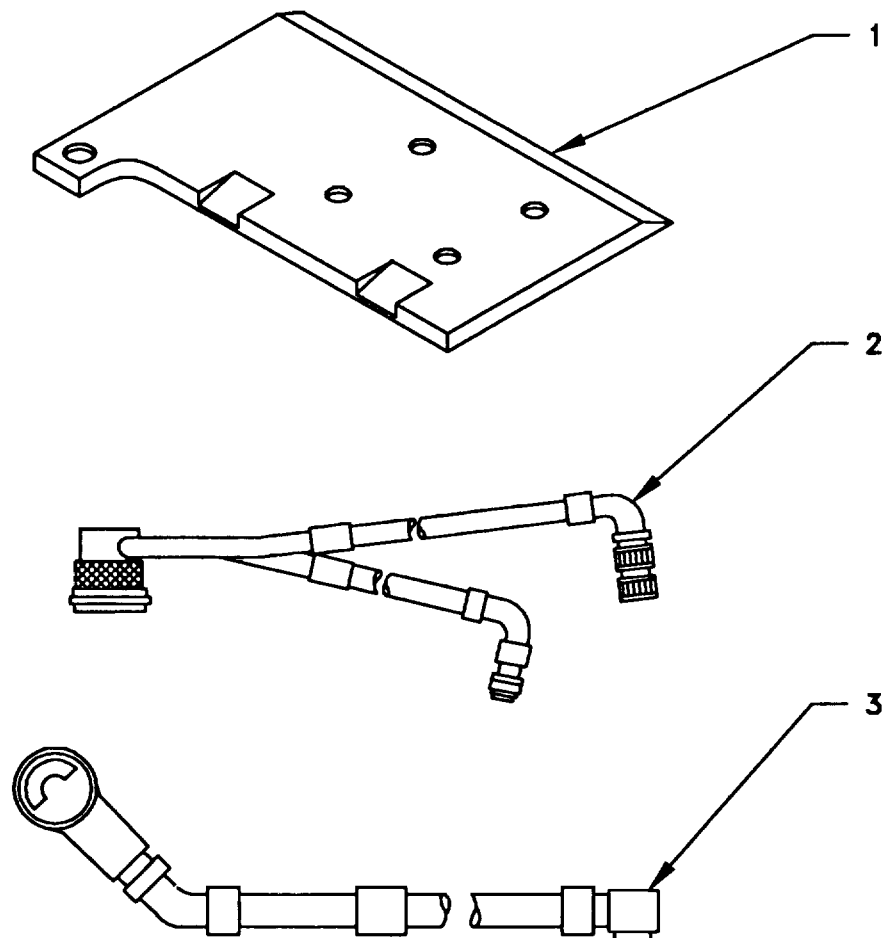


Figure 4-2. TSEC/KY-57 Illustrated Parts List.

4.3.3 Consumable Materials. The table below lists materials required for installation but not supplied with MK.

NSN	NOMENCLATURE
8040-00-117-8510	Adhesive-Sealant, Clear, RTV
6850-00-880-7616	Silicone Compound, MIL-S-8660

4.4 Tools and Test, Measurement, and Diagnostic Equipment (TMDE) Required. The following tools and TMDE

NOMENCLATURE	NSN	QUANTITY
Radio Set* are needed for installation.		1
Pocket Knife, Electrician's	5110-00-240-5943	1
Screwdriver, No. 2 Point Phillips, 4 in	5120-00-234-8913	1
Screwdriver, 1/4 in Flatblade, 4 in	5120-00-222-8852	1
Pliers, Round Nose	5120-00-240-6172	1
Pliers, Diagonal Cutting	5110-00-965-0974	1
1/2 in	5120-00-228-9506	1
Wrench, Open/Box: 7/16 in	5120-00-228-9505	1
9/16 in	5120-00-228-9507	
6 in	1	
Extension Socket 3 in	5120-00-243-1689	1
Handle, Socket Wrench:	5120-00-240-5364	1
Socket 7/16 in	5120-00-227-6703	
1/2 in	5120-00-237-0977	1
9/16 in	5120-00-227-6704	1
Electrical Drill	5120-00-889-8994	1
Drill Bit 9/32 in	5133-OG 6189-9264	

* Use radio issued with your vehicle if available.

5. INSTALLATION PROCEDURES.

This section describes where and how to install MK items in the vehicle. See Figure 5-1 for an overall view of where the MK equipment, as well as radio components, will be installed. When installing MK equipment, be sure to read and follow instructions and illustrations carefully.

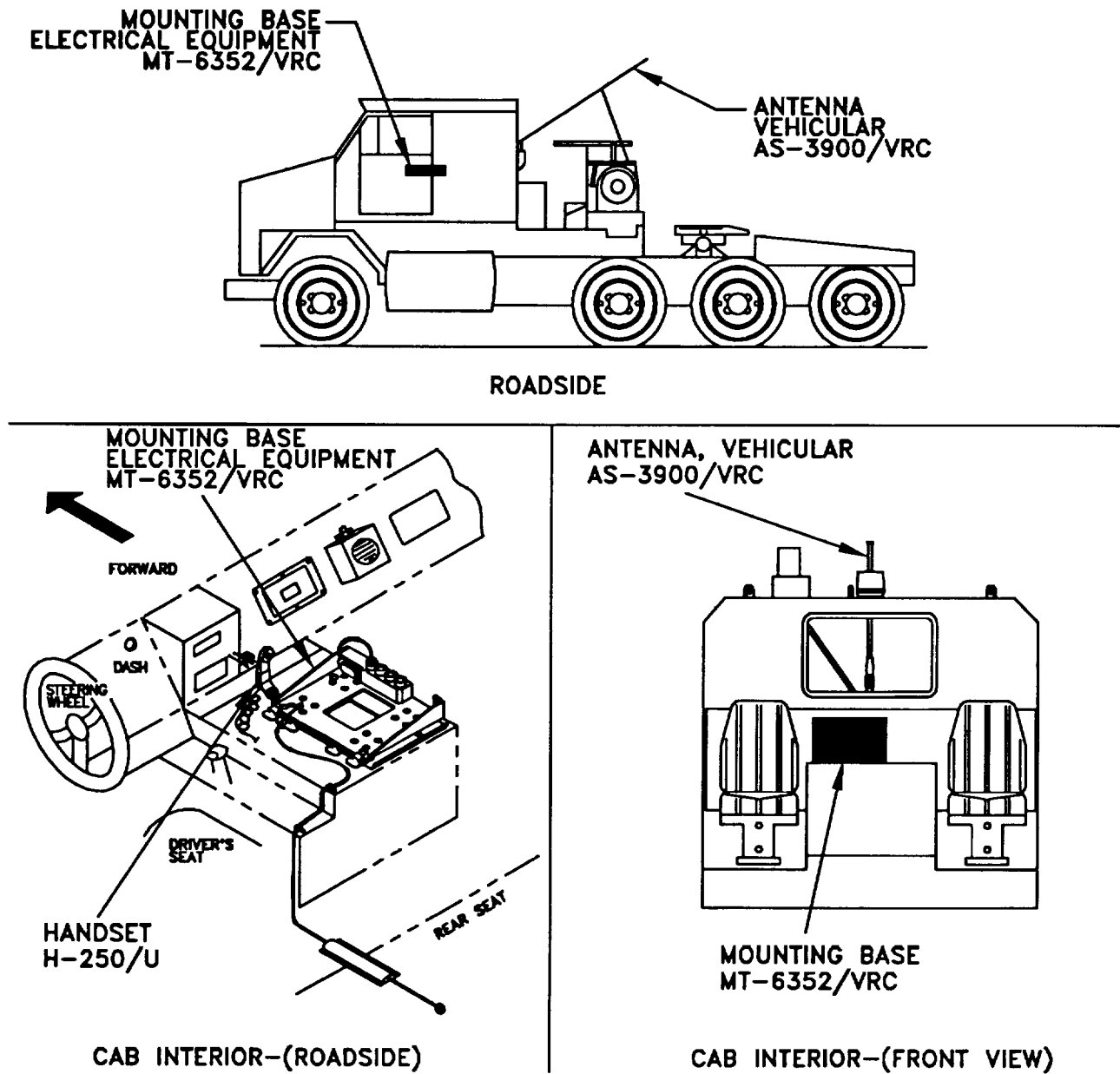
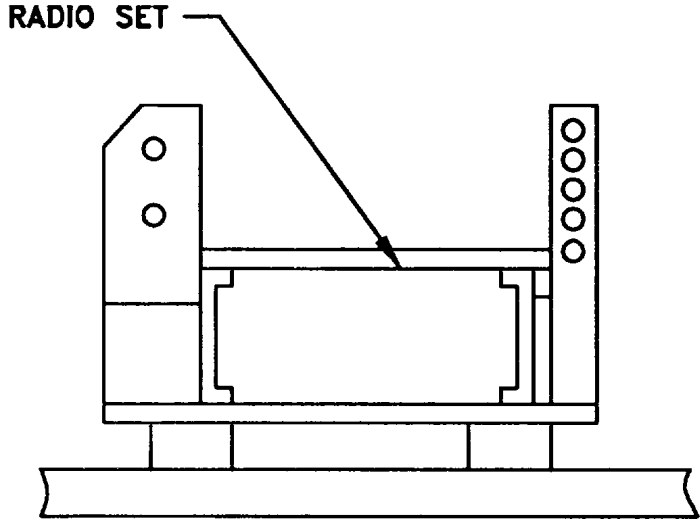
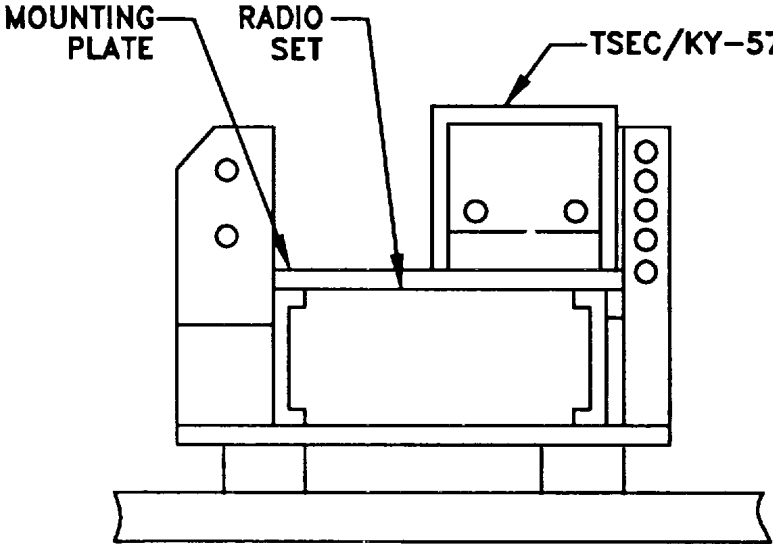


Figure 5-1(1). MK and Radio Installation: MK Equipment Locations



INSTALLATION
FOR
AN/VRC-87A/88A/90A



INSTALLATION
FOR
AN/VRC-87/88/90

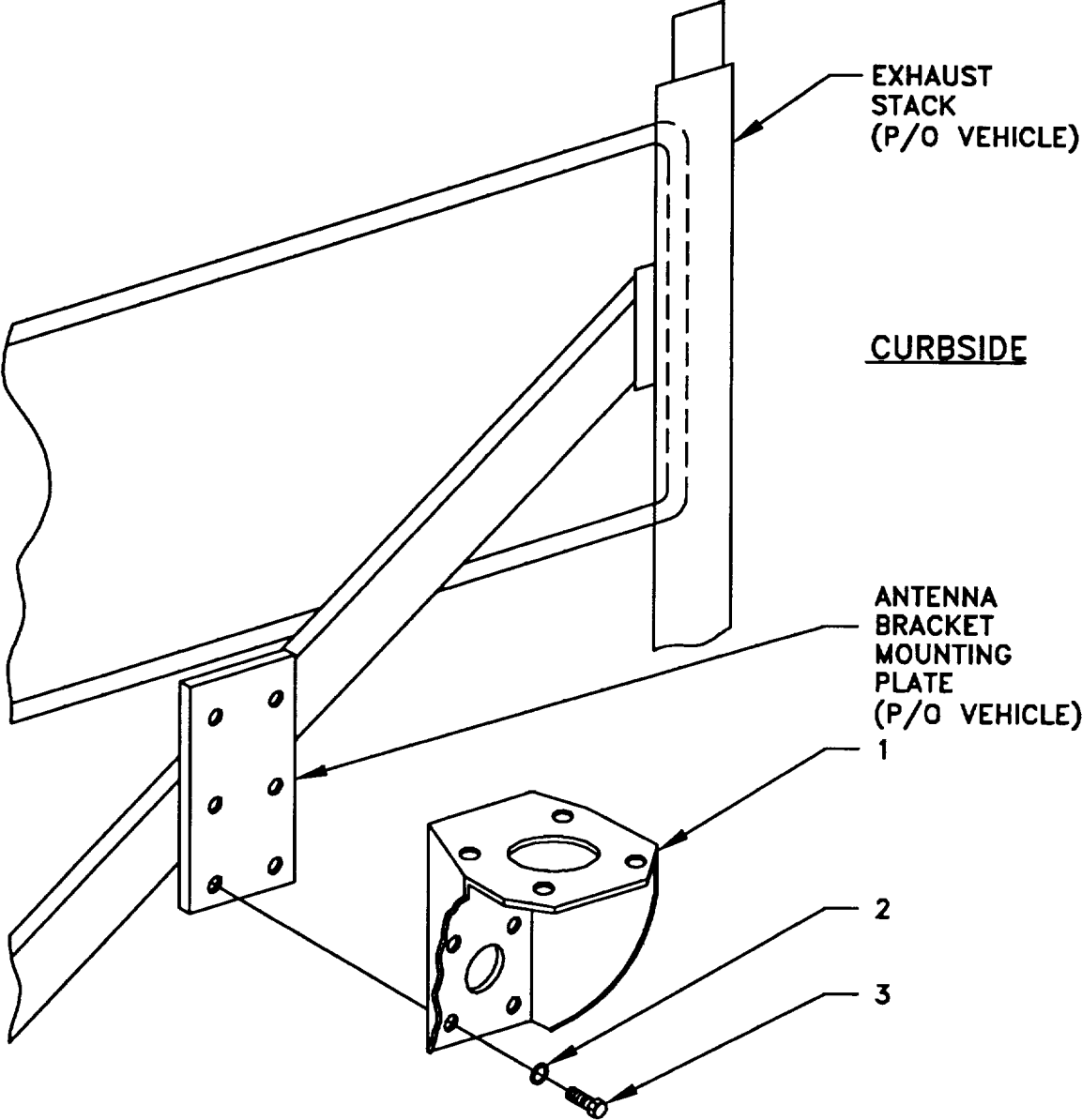
Figure 5-1(2). MK and Radio Installation: Radio Equipment Locations

5.1 Installation of Antenna, Vehicular AS-3900NRC (antenna).

5.1.1 Installation of Antenna Mounting Bracket. Use the following procedures to install mounting bracket. See Figure 5-1(1) for location.

ITEM	ACTION	REMARKS
NOTE		
Apply a thin coat of adhesive-sealant to both sides of each internal/external toothed (IET) washer during installation, and to the area of contact where IET washers are to be placed.		
a. Antenna mounting bracket (1), five internal/external toothed (IET) washers (2) and five existing screws (3).	Locate the antenna hard point mounting plate (P/O vehicle) welded to the exhaust stack brace as shown in Figure 5-2(1). Remove existing hardware, discarding lock washers. Install and secure the mounting bracket to the mounting plate using existing screws and IET washers. Leave the left center screw off at this time as it will be used later to mount the ground strap.	Tools: 7/16 in socket.

5.1.1 Installation of Antenna Mounting Bracket. Continued

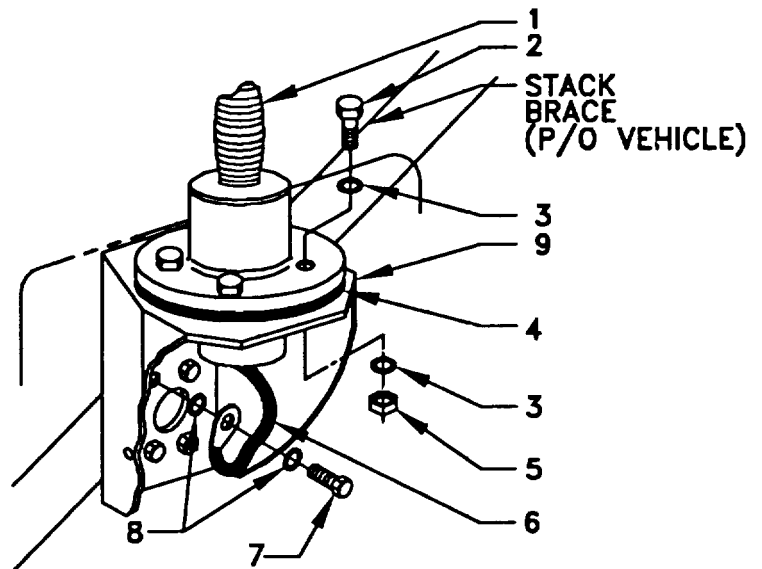


- 1. BRACKET, MOUNTING
- 2. IET WASHER (1/4 IN)
- 3. EXISTING SCREW

Figure 5-2(1). Antenna Mounting Bracket Installation

5.1.2 Installation of Antenna Base. Use this procedure to install antenna base at location shown in Figure 5-1(1).

ITEM	ACTION	REMARKS
NOTE		
Apply a thin coat of adhesive-sealant to both sides of each internal/external toothed (IET) washer during installation, and to the area of contact where IET washer is to be placed.		
a. Gasket (4).	Place on mounting bracket (9) and aline with mounting holes. See Figure 5-2(2).	
b. Antenna base (1).	Place on top of gasket (4) and mounting bracket (9). Align mounting holes.	
c. Four cap screws (2), eight internal/external toothed (IET) washers (3) and four nuts (5).	Install and secure.	Tools: 9/16 in socket, 3 in socket extension, 6 in socket extension and 9/16 in open/box wrench.
d. Ground strap (6), two IET washers (8) and existing screw (7).	Install to mounting bracket (9) and secure.	

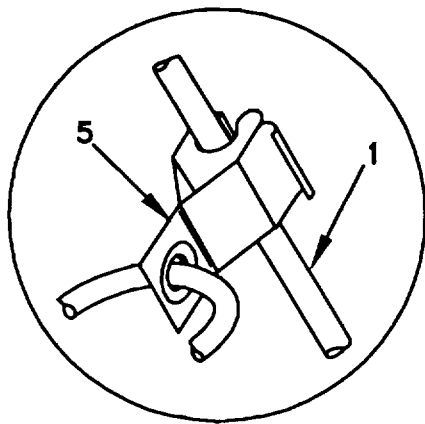


- 1. ANTENNA BASE
- 2. CAP SCREW (3/8-16 X 1 3/4 IN)
- 3. IET WASHER (3/8 IN)
- 4. GASKET
- 5. NUT (3/8-16 IN)
- 6. GROUND STRAP
- 7. EXISTING SCREW
- 8. IET WASHER (1/4 IN)
- 9. MOUNTING BRACKET

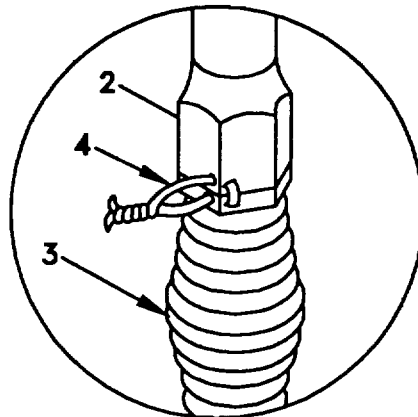
Figure 5-2(2). Antenna Base Installation

5.1.3 Installation of Top Antenna Assembly. The top antenna assembly includes two antenna elements. Use the following procedures to assemble, install and tie down all antennas.

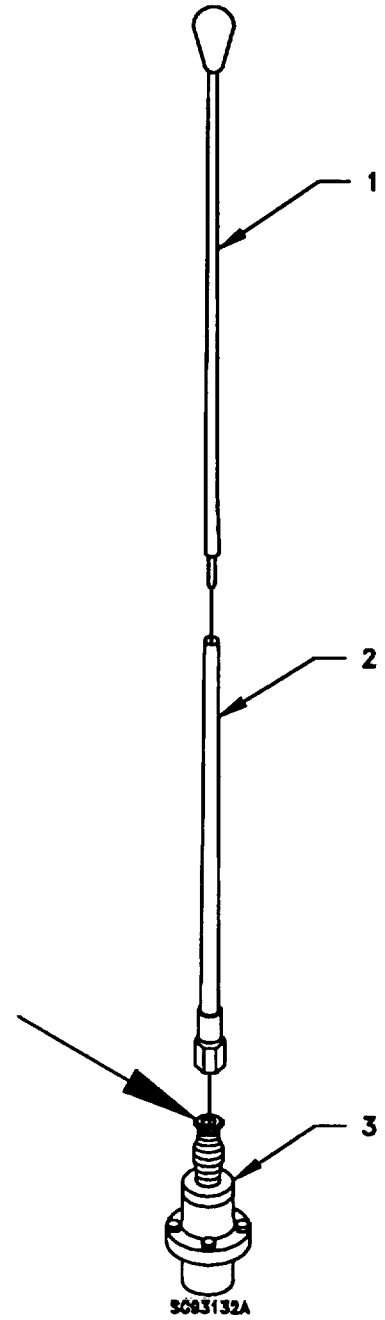
ITEM	ACTION	REMARKS
a. Antenna elements (1,2).	Apply silicone compound to element threads and assemble.	
b. Antenna element (2).	Install and hand-tighten to antenna base (3).	
c. Lock wire (4).	<p>Install to antenna element (2) and antenna base (3). See Figure 5-2(3), Detail A.</p> <p>Cut and remove excess with diagonal cutting pliers.</p>	
d. Fiber rope assembly (5).	<p>Attach clip to antenna element (1). See Figure 5-2(3), Detail B.</p> <p>Tie rope to winch shield to position antenna in desired location.</p>	



DETAIL B



DETAIL A



- 1. ANTENNA ELEMENT UPPER
- 2. ANTENNA ELEMENT (LOWER)
- 3. ANTENNA BASE
- 4. LOCK WIRE
- 5. FIBER ROPE ASSEMBLY

Figure 5-2(3). Top Antenna Assembly Installation

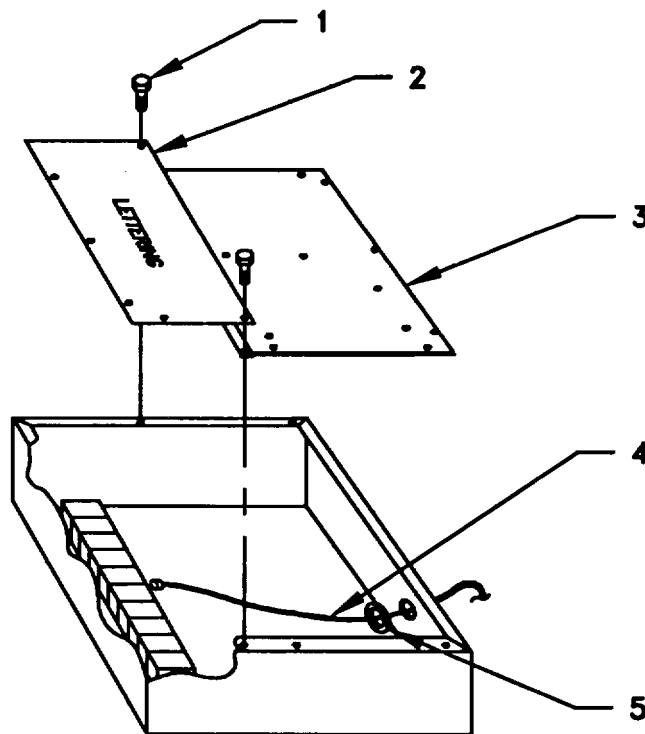
5.2 Installation of Mounting Base, Electrical Equipment MT-6352NRC (mounting base). Remove and retain attaching bag of 5/16 mounting hardware for installation. To insure good electrical grounding, any rust, corrosion or paint around mounting holes in mounting plate should be removed before installing the mounting base.

ITEM	ACTION	REMARKS
------	--------	---------

NOTE

Apply a thin coat of adhesive-sealant to both sides of each internal/external toothed (IET) washer before it is installed, and to the area of contact where IET washer is to be placed.

- | | | |
|-------------------------------------|--|------------------------------------|
| a. Mounting plates. | In the cab, locate the plates between the driver's seat and the passenger seat. See Figure 5-1 (1) for location. Unfasten and remove plates (2) and (3) by removing the existing screws (1). Retain the screws. See Figure 5-3(1). | Tools: No. 2 Phillips screwdriver. |
| b. Power cable (4) and grommet (5). | Locate the existing power cable (4) underneath the plates. Examine the existing power cable and replace with power cable if required. Install grommet (5) when replacing existing power cable. | |



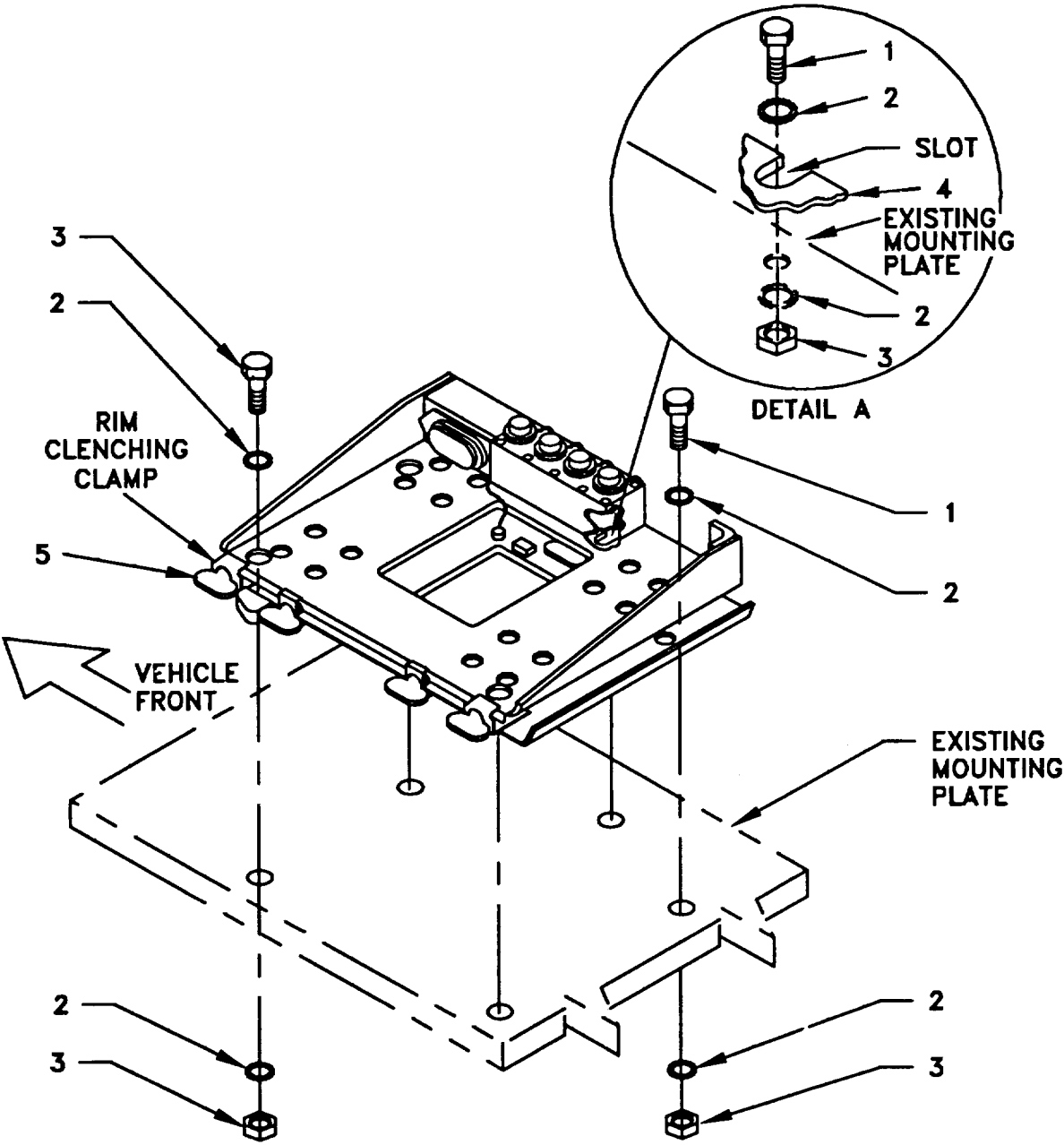
- 1. EXISTING SCREWS
- 2. LETTERED PLATE
- 3. MOUNT PLATE
- 4. POWER CABLE
- 5. GROMMET

Figure 5-3(1). Mounting Base Installation

5.2 Installation of Mounting Base, Electrical Equipment MT-6352VRC (mounting base). Continued.

ITEM	ACTION	REMARKS
c. Mounting base (4).	Remove the five plugs from the existing mounting plate and place mounting base (4) on existing mounting plate over existing holes. See Figure 5-3(2).	
d. Two outer thumbscrews (5).	Turn ccw until both sets of threads have cleared center of holes.	
e. Mounting base (4).	Align four holes and rear slot with matching hole pattern in existing mounting plate.	
f. Five machine bolts (1), ten IET washers (2) and five nuts (3).	Install and tighten to mounting base (4) and existing mounting plate.	Tools: 1/2 in socket and 1/2 in open/box wrench.
g. Two outer thumbscrews (5).	Tighten and secure.	
h. Mounting plates. retained in step a.	Reinstall mounting plates with screws	Tools: No. 2 Phillips screwdriver.

5.2 Installation of Mounting Base, Electrical Equipment MT-6352/VRC (mounting base). Continued.



- 1. MACHINE BOLT (5/16-24 X 3/4 IN)
- 2. IET WASHER (5/16 IN)
- 3. NUT (5/16-25 IN)
- 4. MOUNTING BASE
- 5. THUMBSCREW

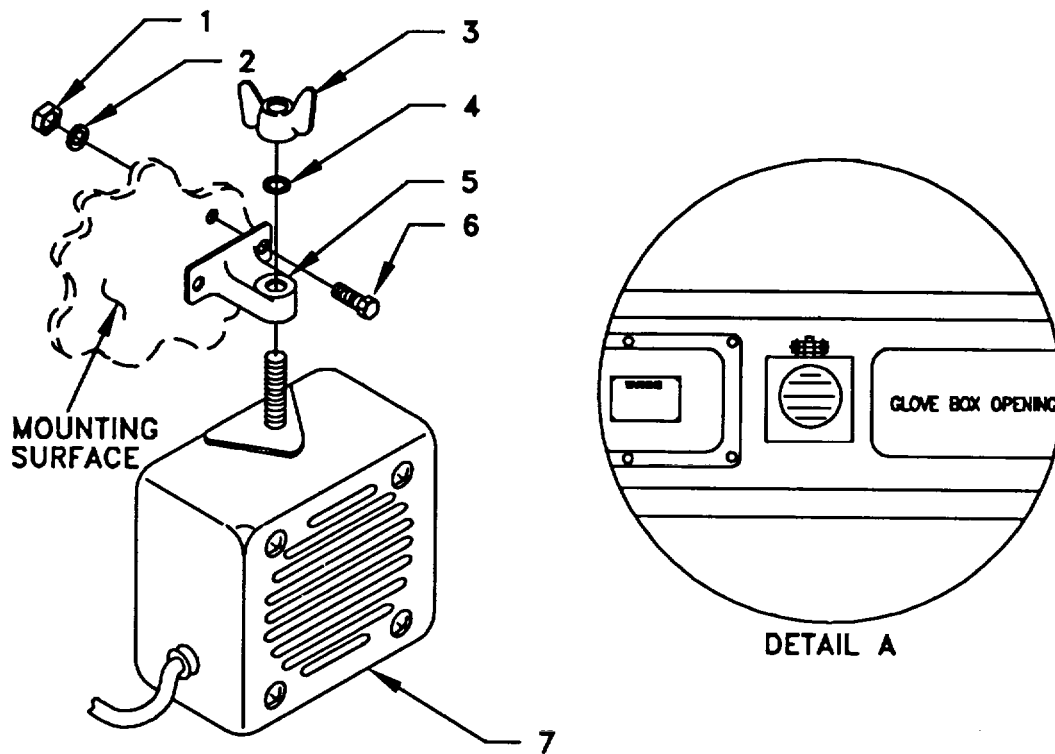
Figure 5-3(2). Mounting Base Installation.

5.3 Installation of Loudspeaker, Permanent Magnet LS-454/U (speaker). Mount the speaker LS-454/U to the dashboard (Figure 5-1(1)). Refer to Figure 5-4, Detail A for location of mounting holes.

CAUTION

Behind this location are heater and air hoses, care must be taken when drilling.

ITEM	ACTION	REMARKS
a. Bracket (5).	Use bracket as template. Drill two 9/32 in diameter holes: See Figure 5-4, Detail A.	Tools: Drill, 9/32 in drill bit.
b. Two nuts (1), two lock washers (2) and two screws (6).	Secure speaker bracket (5) to the dashboard. See Figure 5-4, Detail A.	Tools: 7/16 in socket and 7/16 in open/box wrench.
c. Speaker (7).	Insert stud on speaker (7) through bracket (5). Secure with wing nut (3) and lock washer (4).	

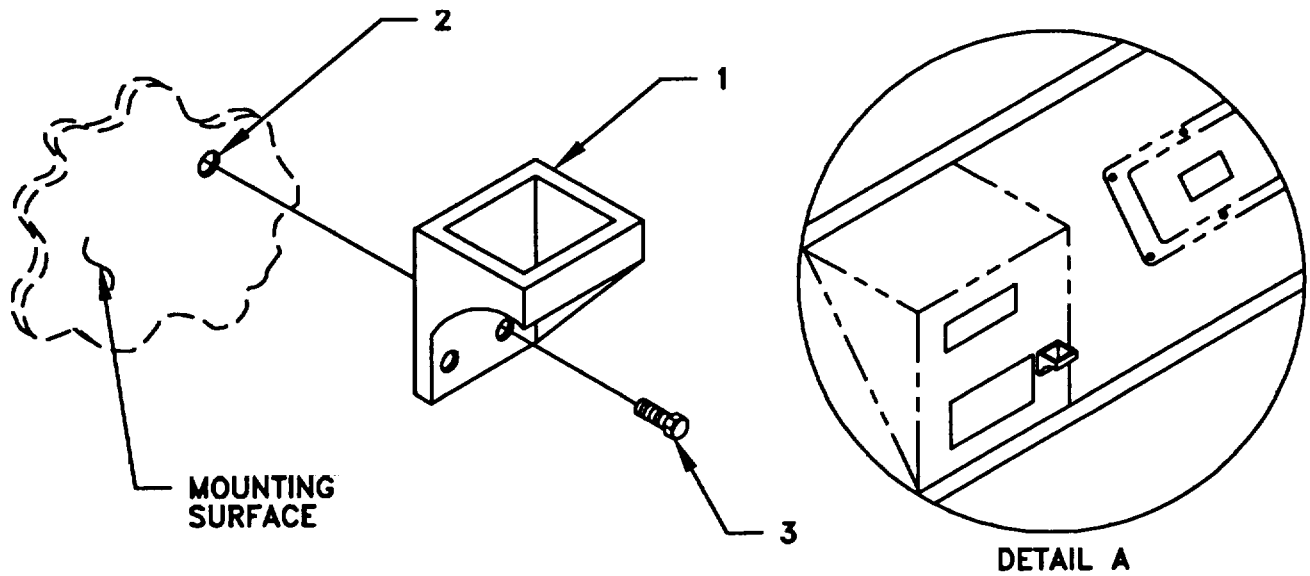


1. NUT (1/4-20 IN)
2. LOCK WASHER (1/4 IN)
3. WING NUT (P/O 7)
4. LOCK WASHER (P/O 7)
5. SPEAKER BRACKET (P/O 7)
6. CAP SCREW (1/4-20 X 1 IN)
7. LS-454/U LOUDSPEAKER

Figure 5-4. Installation of Loudspeaker, LS-454/U

5.4 Installation of Handset Holder for Handset H-250/U. For mounting location for handset holder refer to Figure 5-5, Detail A.

ITEM	ACTION	REMARKS
a. Handset holder (1).	Remove the indicated existing screws from dash. See Figure 5-5, Detail A.	Tools: No. 2 cross tip screwdriver.
b. Handset holder (1). holder.	Using the existing screws, mount the holder.	



- 1. HANDSET HOLDER
- 2. EXISTING CLINCH NUTS
- 3. EXISTING SCREWS

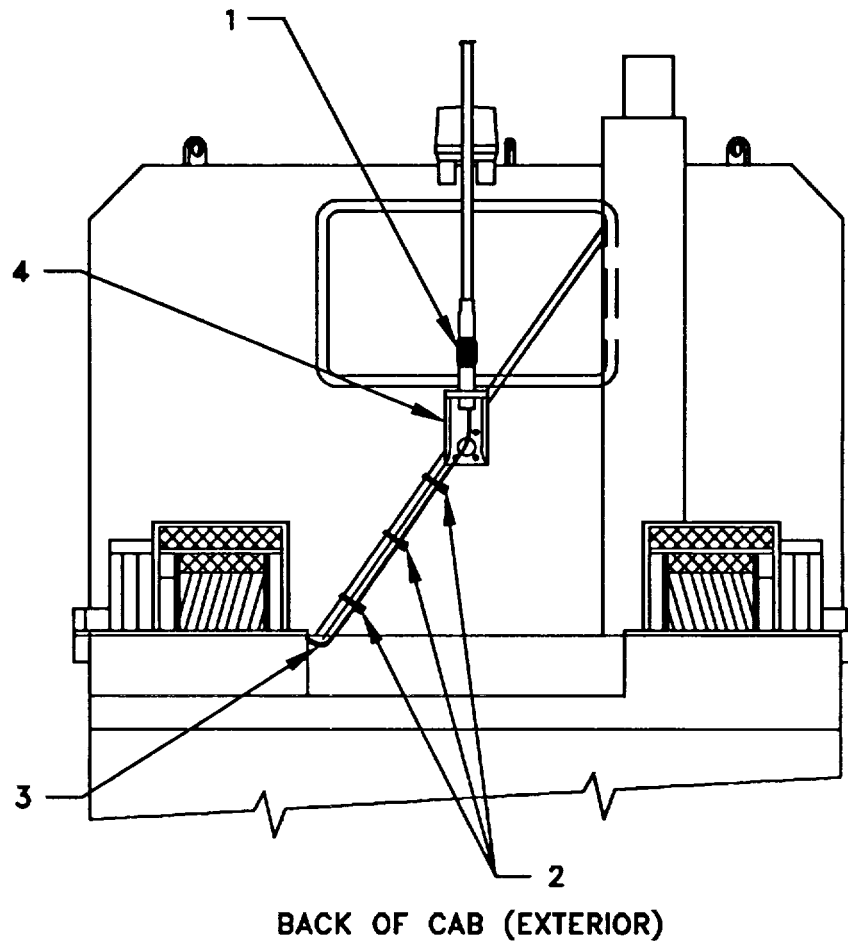
Figure 5-5. Installation of Handset Holder for H-250/U

5.5 Installation of Cables. To accomplish the installation, leave loop clamps and tiedown straps loose enough to adjust cable slack and allow easy adjustment of equipment. When installation is complete, tighten and secure all clamps, clips and tiedown straps.

WARNING

Make sure vehicle power source is positioned OFF or disconnected before installing cables.

ITEM	ACTION	REMARKS
a. RF cable (3) connector P1.	Connect and secure to antenna base (4) connector J1. See Figure 5-6(1).	



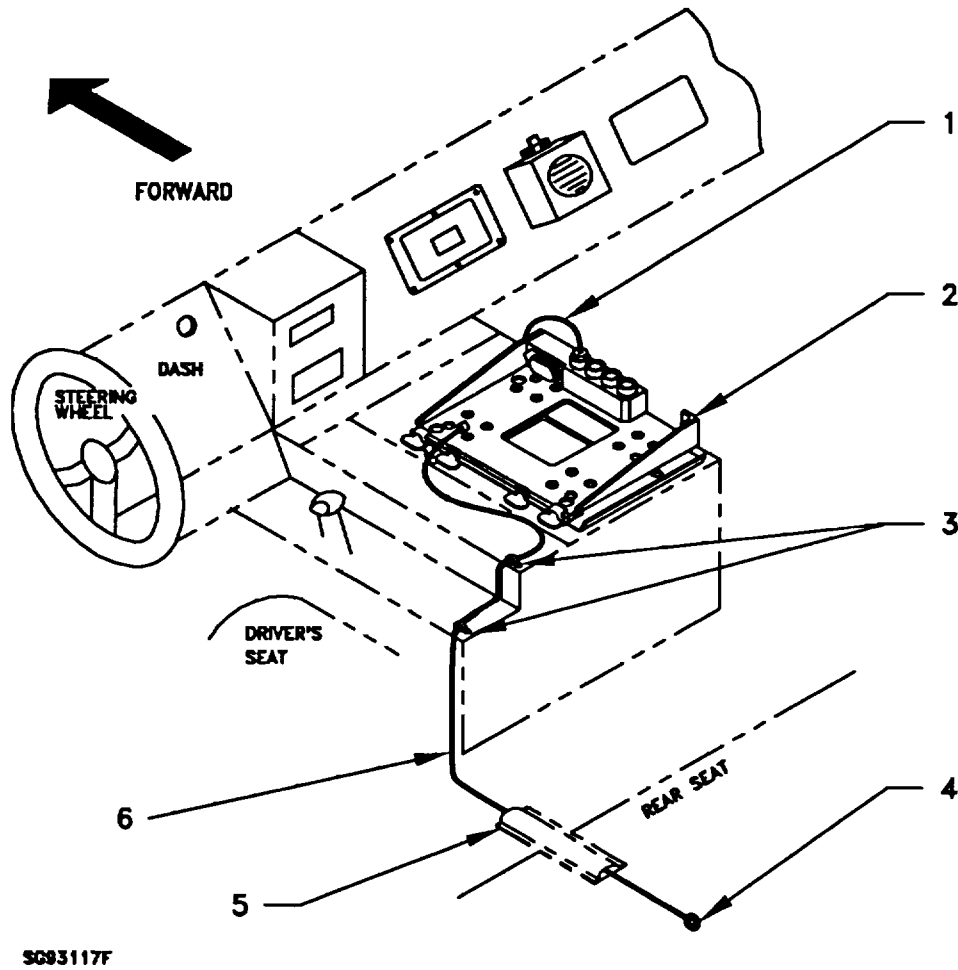
- 1. ANTENNA
- 2. TIE DOWN STRAPS
- 3. RF CABLE
- 4. ANTENNA BASE

Figure 5-6(1). Installation of Cables

5.5 Installation of Cables. Continued.

ITEM	ACTION	REMARKS
b. Tie down strap (2).	Tie-wrap the RF cable to the exhaust stack brace as shown in Figure 5-6(1). Leave a drip loop.	
c. Grommet (4).	Refer to Figure 5-6(2). Remove the floor plug under the rear seat, feed the RF cable through hole and insert grommet (4). Seal the cable and grommet with RTV sealant.	
d. Cable channel (5).	Route cable through the cable channel and secure with existing loop clamps (3) and existing hardware (Figure 5-6(2)). Dress the RF cable to the left side of the mounting base.	Tools: No. 2 Phillips screwdriver.
e. RF cable (6) connector P2.	Position on top of mounting base (2).	
f. Power cable (1).	Connect and secure to mounting base (2), connector J1. See Figure 5-6(2).	

5.5 Installation of Cables. Continued.



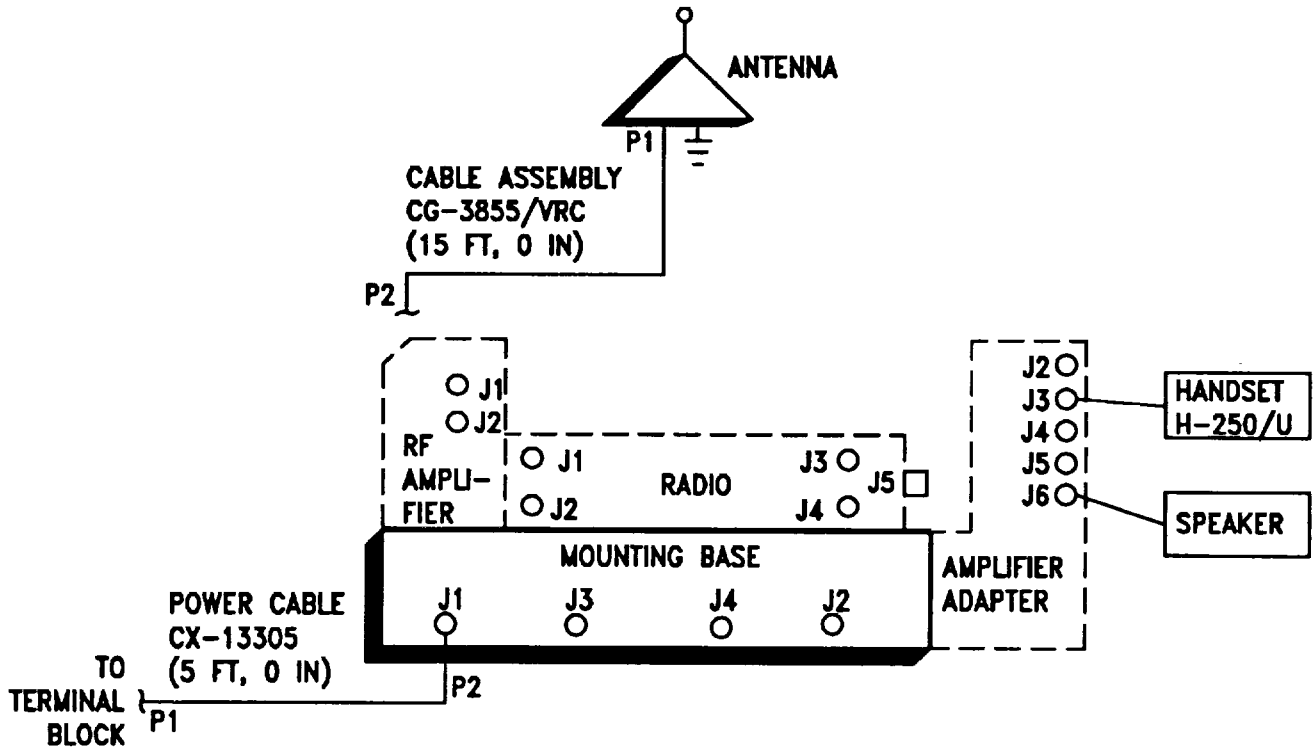
- 1. POWER CABLE
- 2. MOUNTING BASE
- 3. EXISTING LOOP CLAMPS
- 4. GROMMET
- 5. EXISTING CABLE CHANNEL
- 6. RF CABLE

Figure 5-6(2). Installation of Cables

5.6 Installation of MK-2499/VRC. For Radio Set ANNRC-87/88/90, install MK-2499NRC (TSEC/KY-57 security equipment) in the location shown in Figure 5-1(2) with four (4) each screws and mounting plate. Refer to section 5.7 for connection of cables.

5.7 Post-Installation and Checkout. After equipment is installed and cables are connected, perform the following steps.

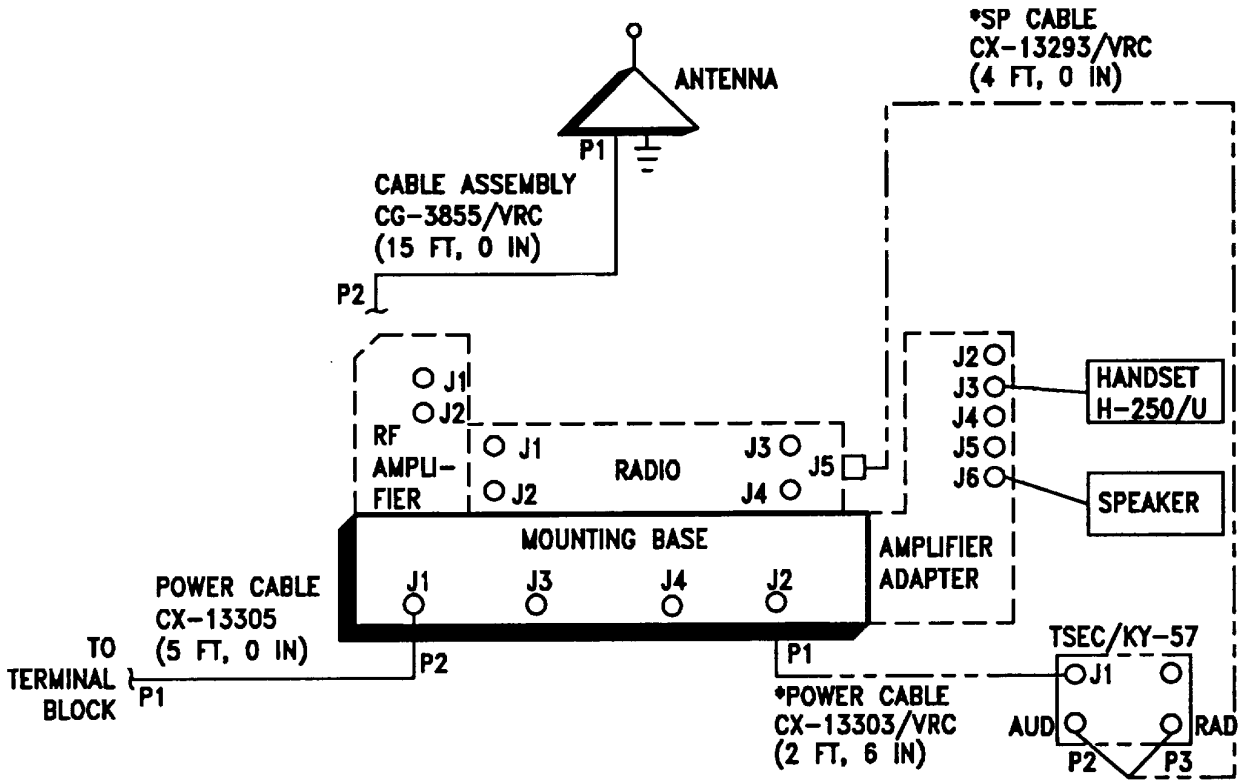
ITEM	ACTION	REMARKS
a. Equipment.	Check for secure mounting. Check for loose parts, connectors, and mounting hardware.	
b. Cables.	Check for proper installation and connection of cables. See Figure 5-7 for cable connections. Unused cables should be stowed in appropriate place inside the vehicle.	
c. Loop clamps.	Check that all have been properly installed and tightened.	
d. Protective covers.	Insure that all installed cables are covered when not in use or connected.	
e. Radio issued with vehicle.	Install and connect cables. See TM 11-5820-890-20-1 or TM 11-5820-890-20-4 for installation and operational (OP) checks and instructions.	
f. MK line replaceable units.	See TM 11-5820-890-20P for Repair Parts and Special Tools List (RPSTL) information.	



CABLE ASSEMBLY	FROM			TO		
	CABLE CONN.	UNIT	UNIT CONN.	CABLE CONN.	UNIT	UNIT CONN.
CG-3855/VRC (15 FT, 0 IN)	P2	RF Amplifier	J1	P1	Antenna base	J1
CX-13305 (5 FT, 0 IN)	P2	Mounting Base	J1	P1	Vehicle Power Source	Terminal Block
Speaker Cable		Amplifier Adapter	J6		Speaker	
Handset Cable		Amplifier Adapter	J3		Handset	

Figure 5-7(1). Cable Diagram: For AN/VRC-87A/88A/90A

5.7 Post-Installation and Checkout. Continued.



CABLE ASSEMBLY	FROM			TO		
	CABLE CONN.	UNIT	UNIT CONN.	CABLE CONN.	UNIT	UNIT CONN.
CG-3855/VRC (15 FT, 0 IN)	P2	RF Amplifier	J1	P1	Antenna Base	J1
CX-13305 (5 FT, 0 IN)	P2	Mounting Base	J1	P1	Vehicle Power Source	Terminal Block
Speaker Cable		Amplifier Adapter	J6		Speaker	
Handset Cable		Amplifier Adapter	J3		Handset	
*CX-13303/VRC (2 FT, 6 IN)	P1	Mounting Base	J2	P2	MT-6429/VRC	J1
*CX-13293/VRC (4 FT, 0 IN)	P1	Radio	J5	P2 P3	TSEC/KY-57	AUD RAD

*Not Supplied in this MK

Figure 5-7(2). Cable Diagram: AN/VRC-87/88/90

APPENDIX A**REFERENCES**

AMDF	Army Master Data File (Microfiche)
AR 710-2	Supply Policy Below the Wholesale Level as Contained in Unit Supply UPDATE
AR 725-50	Requisitioning, Receipt and Issuing System in UPDATE
DA Pam 25-30	Consolidated Index of Army Publications (Microfiche)
DA Pam 710-2-1	Using Unit Supply System Manual Procedures as Contained in Unit Supply UPDATE
SB 11-131-2	Vehicular Radio Sets and Authorized Installations (SINCGARS)
TM 11-5820-890-10-1	Operator's Manual (ICOM Radio Sets)
TM 11-5820-890-10-3	Operator's Manual (Non-ICOM Radio Sets)
TM 11-5820-890-20-1	Unit Maintenance Manual (ICOM Radio Sets)
TM 11-5820-890-20-2	Unit Maintenance Manual (ICOM Radio Sets)
TM 11-5820-890-20-4	Unit Maintenance Manual (Non-ICOM Radio Sets)
TM 11 -5820-890-20P	Repair Parts and Special Tools List

A-1/(A-2 blank)

TB 11-5820-890-20-83

By Order of the Secretary of the Army:

GORDON R. SULLIVAN
General, United States Army
Chief of Staff

Official:


MILTON H. HAMILTON
Administrative Assistant to the
Secretary of the Army
06143

DISTRIBUTION:

To be distributed in accordance with DA Form 12-36-E, block
9650 requirements for TB 11-5820-890-20-83.

RECOMMENDED CHANGES TO EQUIPMENT TECHNICAL PUBLICATIONS



THEN... JOT DOWN THE DOPE ABOUT IT ON THIS FORM, CAREFULLY TEAR IT OUT, FOLD IT AND DROP IT IN THE MAIL!

SOMETHING WRONG WITH THIS PUBLICATION?

FROM: (PRINT YOUR UNIT'S COMPLETE ADDRESS)

DATE SENT

PUBLICATION NUMBER

PUBLICATION DATE

PUBLICATION TITLE

BE EXACT... PIN-POINT WHERE IT IS

PAGE NO.

PARA-GRAPH

FIGURE NO.

TABLE NO.

IN THIS SPACE TELL WHAT IS WRONG AND WHAT SHOULD BE DONE ABOUT IT:

TEAR ALONG PERFORATED LINE

PRINTED NAME, GRADE OR TITLE, AND TELEPHONE NUMBER

SIGN HERE:

DA FORM 2028-2 JUL 79

PREVIOUS EDITIONS ARE OBSOLETE.

P.S.—IF YOUR OUTFIT WANTS TO KNOW ABOUT YOUR RECOMMENDATION MAKE A CARBON COPY OF THIS AND GIVE IT TO YOUR HEADQUARTERS.

PIN: 072246-000